

A CANNY CHAP

THEY call Albert Whitelock the Tin Man, after the film character in *The Wizard Of Oz*.

That is because he's a wizard at making things out of tin cans.

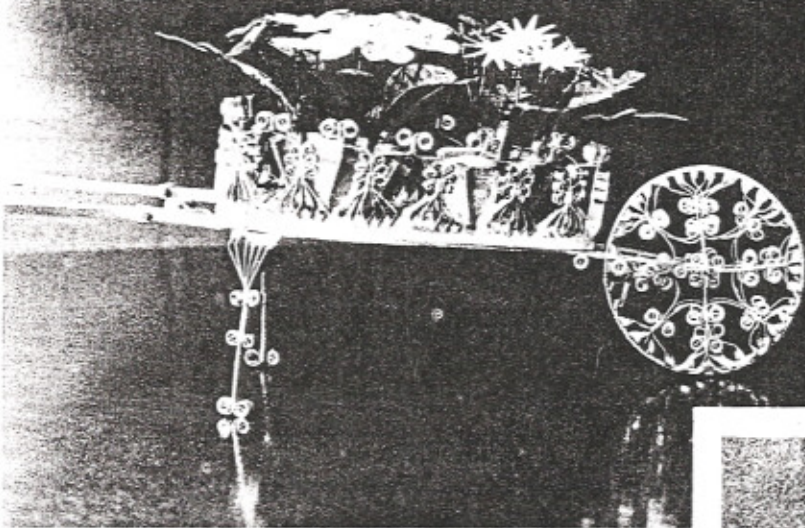
He specialises in miniature furniture, especially chairs, tables and doll-size beds.

Albert, 60, says: "It's not a hack and bash operation. One mistake and you lose the can, so you must think the job through first."

He sells some of his creations but most go to friends and charities near his home in Woodborough, Notts. Two tiny chairs he sent to the Queen as a Silver Jubilee present are in a museum at Sandringham.

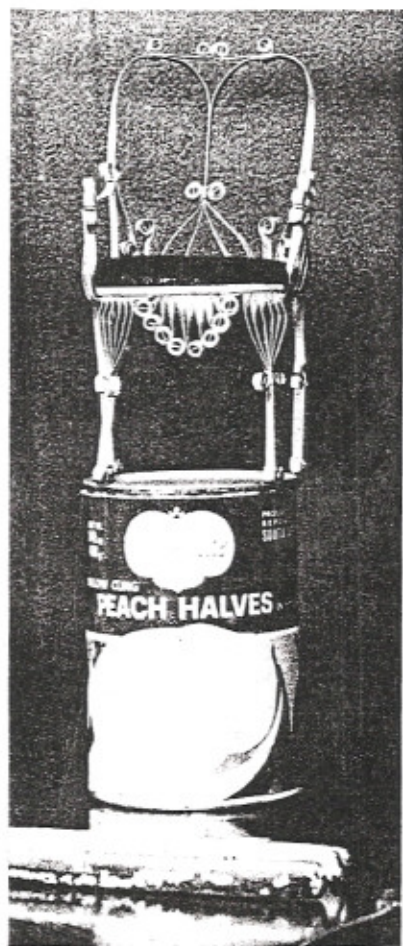
With his specially adapted tools Albert can turn a fruit tin into a regal-looking chair—complete with gold paint and red velvet seat—in under five hours.

But his masterpiece, an intricate wheelbarrow, took him 11 days.



ABOVE: It took two cans like that on the right to make this wheelbarrow.

LEFT: A detailed view of the barrow, with its intricately worked wheel and supports



Transformation... from tin to chair

GEORGE THE HEEL GETS GIRLS HOPPING MAD

GEORGE MITCHELL gets his kicks in a strange way. He has an inexplicable compulsion to stamp on women's feet.

The American negro, from Nashville, Tennessee, has been arrested for assault more than 40 times in the past 13 years.

And he has spent 11 of his 31 years in jail because of his antics.

Mild-mannered, bespectacled George weighs 14 stone 4 lbs.—so when he puts his foot down, his victims really feel it.

He has broken many feet

From MARY-JO ADAMS in Nashville

—and it's always white women he gets a crush on.

Criminal Court Judge John Draper, who sentenced George to a year in jail last January, for stamping on the feet of women at a pavement art show, said: "I've never seen a case quite as bizarre as this one."

During this sentence George managed to go on the "stampage" again. It happened when two

sheriff's deputies took George—a prison "trustee"—to a Nashville farmers' market store to pick up some equipment. They left him in the car while they went into the shop.

As soon as they had turned their backs, he slipped out of the car, spotted two unsuspecting women, gave them a rapid stamping and hot-footed it back to the car.

The incident cost the two deputies their jobs.

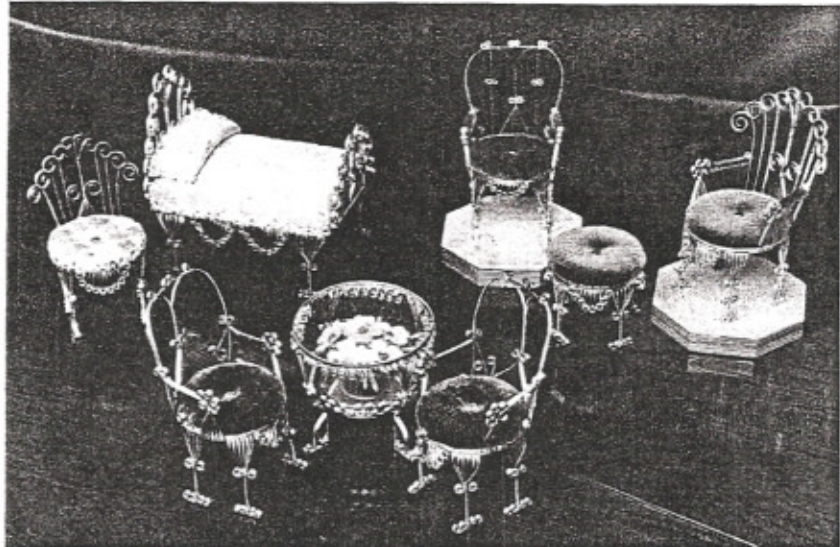
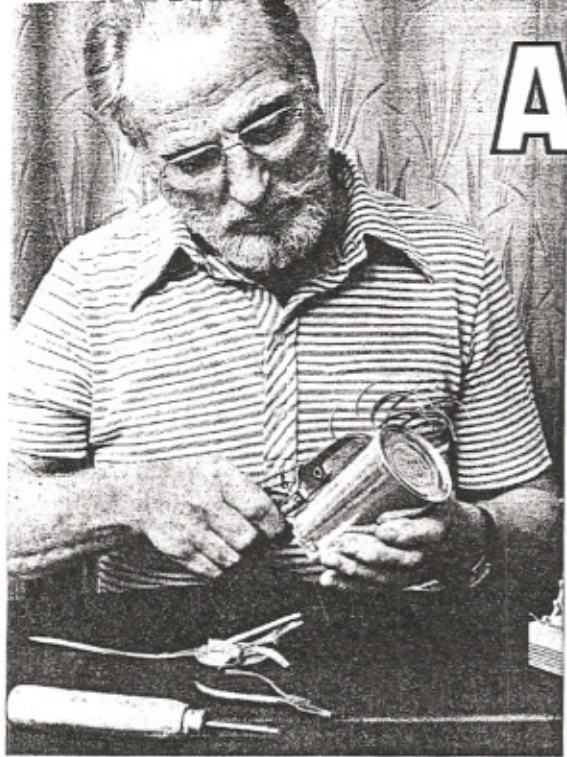
So why does he do it? Not even George knows the answer.

He says: "I'm just walking along when this feeling starts—Step on this foot! Step on that foot!"

Assistant Public Defender Andrei Lee says: "He doesn't seem a basically cruel person. But if he were out on the street today, he'd probably be back in jail tonight for stepping on somebody's foot."

For the time being, the women of Tennessee can walk free. George is in jail cooling his heels after his latest escapade. He just can't stamp it out.

ALBERT'S SUCH



Albert gets to work on a tin ...

... to produce things like these

FOUR SQUARE

F	O	R	T
O	B	O	E
R	O	L	L
T	E	L	L

ARRANGE 16 letters into four-letter words which read the same across and down (see example above). The solution is on Page 29.

HERE are the 16 letters for this week's puzzle and a clue to one of the words—but we're not saying which one it is.

**B E E K K M
M N N N N O
O O O R**

Clue: **HARD SWELLING**



Now, is this really right? Albert casts a critical eye over some of the "furniture" in his collection